



Village at  
**THORNCREEK**  
APARTMENT HOMES



**LIFE LESS ORDINARY**

## EXPAND YOUR HORIZONS

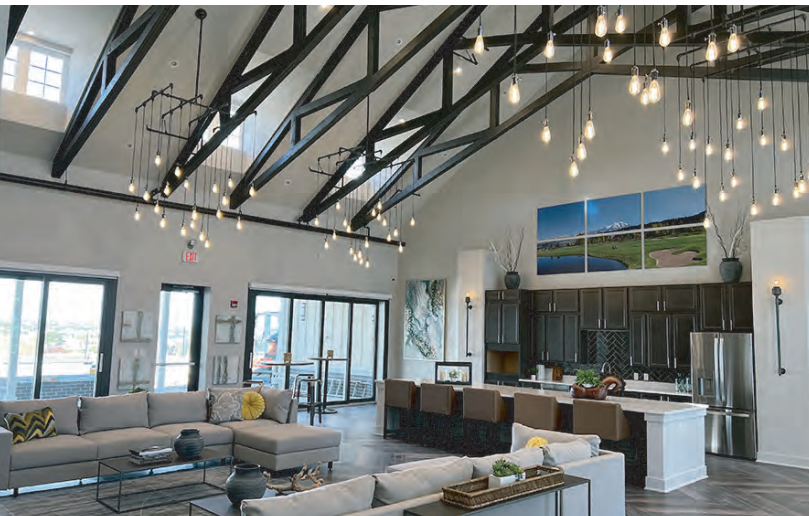
Where small town charm, big-city amenities, luxury lifestyles, and entrepreneurial spirit come together to create a livability factor you won't find anywhere else. Enjoy a vibrant community with neighbors who exemplify the values of Thornton's culture and our remarkable quality of life. You'll be happy to call Village at Thorncreek home.

## APARTMENT FEATURES

- Distinctive, Open Floor Plans
- Luxurious Baths & Spacious Bedrooms
- Impressive Walk-in Closets
- Full-size Washer/Dryers Included
- Fully Appointed Kitchens with Stainless Appliance Package
- Granite Countertops
- Carpet & Wood Plank Flooring
- Central Air & Heating
- Window Coverings
- Private Locked Storage
- Private Patio, Balcony or Sunroom
- Fire Alarm/Suppression System

## COMMUNITY AMENITIES

- State-of-the-Art Fitness Center
- Outdoor Dining Area with Grills
- Outdoor Fireplace & Sitting Area
- Pet Spa Bathing Area
- Resort-style Swimming Pool with Sundeck
- Clubroom Lounge
- Outdoor Lounge with Firepits
- Playground & Tot Lot
- Pet Friendly with Bark Park
- Garages & Carports Available
- Professional Management & Maintenance Teams
- 24-Hour Emergency Maintenance



# STUDIO & ONE BEDROOM COLLECTION



## **HEARTLEAF** STUDIO

702 sq.ft.

Bedroom: 12'x9'  
Great Room: 13'x12'  
Kitchen: 12'x9'



## **SUNFLOWER** STUDIO

549 sq.ft.

Bedroom: 18'x11'  
Great Room: 12'x8'  
Kitchen: 14'x9'



## **GERANIUM** ONE BED | ONE BATH

754 sq.ft.

Bedroom: 13'x10'  
Great Room: 15'x8'  
Kitchen: 11'x9'



## **LARKSPUR** ONE BED | ONE BATH

846 sq.ft.

Bedroom: 13'x11'  
Great Room: 15'x11'  
Kitchen: 11'x9'

Proudly managed by



Welcome to a premium residential experience inspired by value, convenience and executed with practical simplicity.

# TWO & THREE BEDROOM COLLECTION



## **EVERLASTING** TWO BED | TWO BATH

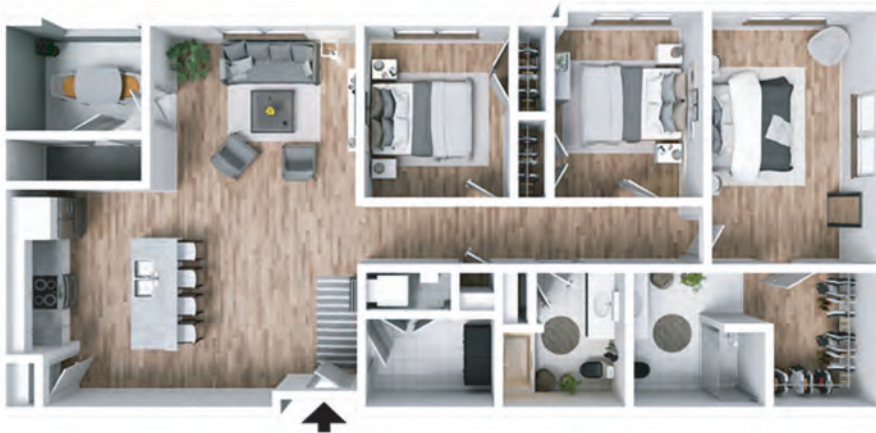
1041 sq.ft.

Bedroom 1: 13'x11'  
Bedroom 2: 12'x9'  
Great Room: 11'x11'  
Kitchen: 11'x9'

## **BLUEBELL** TWO BED | TWO BATH

1092 sq.ft.

Bedroom 1: 13'x12'  
Bedroom 2: 12'x11'  
Great Room: 13'x12'  
Kitchen: 11'x9'



## **PEARLY** THREE BED | TWO BATH

1501 sq.ft.

Bedroom 1: 17'x12'  
Bedroom 2: 13'x9'  
Bedroom 3: 10'x11'  
Great Room: 17'x14'  
Kitchen: 11'x9'

